

3 BEDROOMS

The Ashford

1,806 SQ. FT.

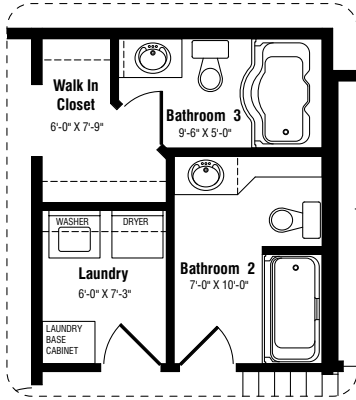
This spacious split-level home features a large living room with bay window and an open-concept kitchen/dining area. The master bedroom offers an ensuite with shower as well as an extra-large walk-in closet. Interior options include upper floor laundry area, kitchen island, column and arch entry and luxury ensuite. Optional exteriors offer either a vaulted living room window or a covered front porch.

Standard features include:

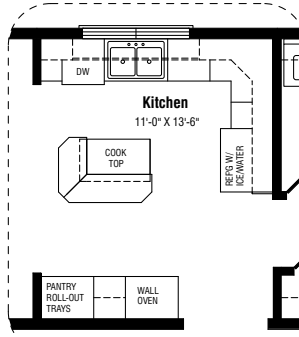
- Living room with large bay window
- Powder room and laundry area next to kitchen
- Dining room with patio doors
- Master bedroom with walk-in closet and ensuite with shower
- Prestige *ComfortPlus* energy efficiency package

Floor plan options also offer:

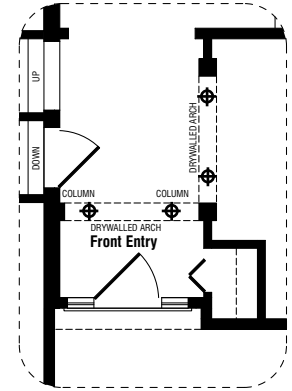
- Vaulted living room ceiling and window
- Covered front porch
- Front entry with archways and columns
- Master luxury ensuite
- Upper level laundry area
- Kitchen island with cooking area and raised bartop



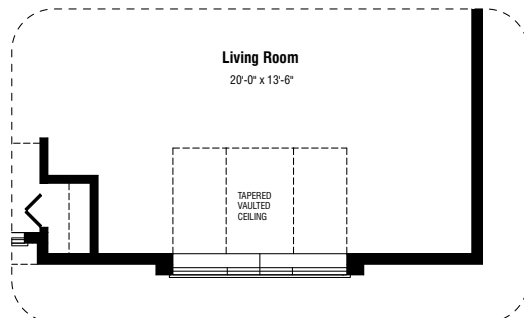
Bathroom Option



Kitchen Option



Front Entry Option



Living Room Option

The Ashford

3 BEDROOMS • 2 1/2 BATHROOMS • 1,806 SQ. FT.

56' x 36'28"

ELEVATION B



ELEVATION C



Note: Any drawings, concepts or designs created by Prestige Homes are the sole property of Prestige Homes and are subject to copyright protection under the Canadian Intellectual Property Act. Any attempt at utilizing a design, part of a design or concept without express written permission is strictly prohibited. All dimensions are approximate. Sizes and specifications are subject to change without notice.