

3 BEDROOMS

# The Brighton

1,848 SQ. FT.

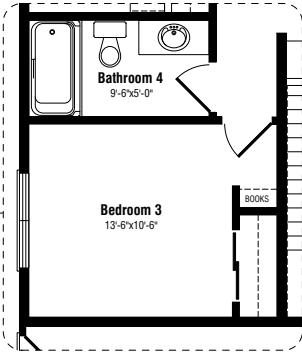
This large ranch-style home features three bedrooms, a spacious great room and open-concept kitchen and dining area. The master bedroom has an ensuite with shower as well as “his and hers” walk-in closets. Optional exteriors offer choice of windows and front- or side-opening in the two-car garage.

**Standard features include:**

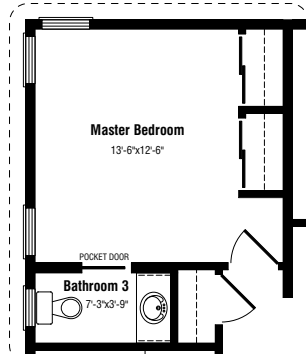
- Private master suite with deluxe bathroom and “his and hers” walk-in closets
- Open kitchen/dining room with raised bartop for casual meals
- Dining room with patio doors
- Attached two-car garage
- Prestige *ComfortPlus* energy efficiency package

**Floor plan options also offer:**

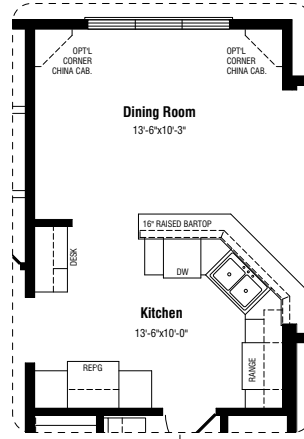
- Two bedrooms plus den configuration
- Enlarged great room plus study/alcove
- Larger dining area with built-in corner china cabinets
- Gas fireplace in great room
- Angled kitchen counter with raised bartop



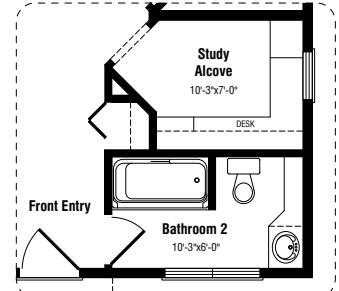
Bedroom Option



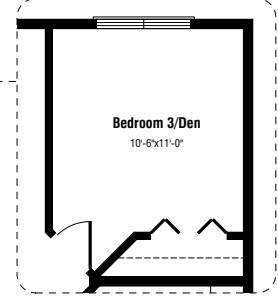
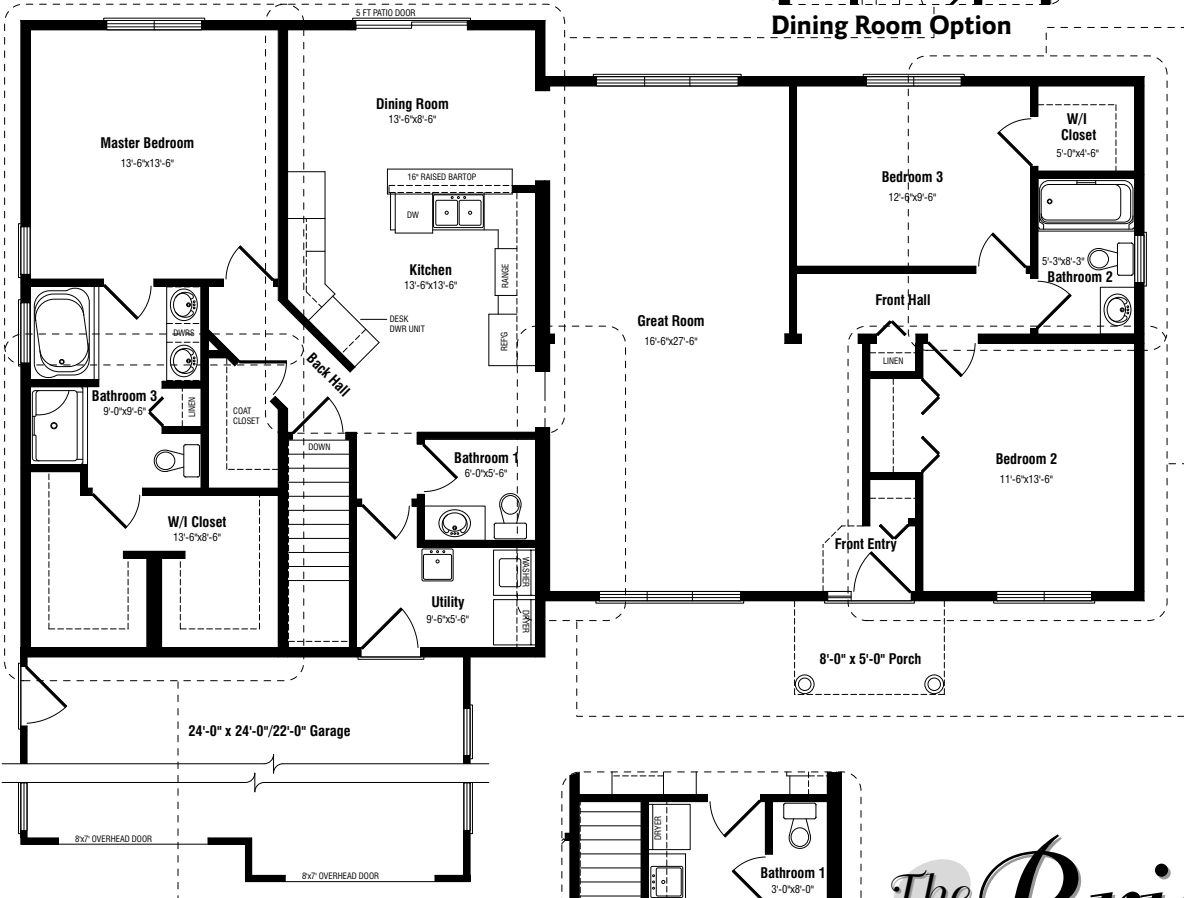
Master Bedroom Option



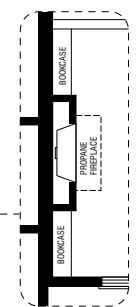
Dining Room Option



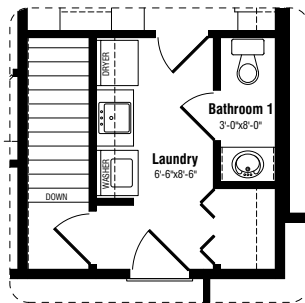
Study Room Option



Bedroom Option



Fireplace Option



Laundry Option

# The Brighton

3 BEDROOMS • 3 BATHROOMS

1,848 SQ. FT. + GARAGE

60'/34' x 28'

ELEVATION B



ELEVATION C



**Note:** Any drawings, concepts or designs created by Prestige Homes are the sole property of Prestige Homes and are subject to copyright protection under the Canadian Intellectual Property Act. Any attempt at utilizing a design, part of a design or concept without express written permission is strictly prohibited. All dimensions are approximate. Sizes and specifications are subject to change without notice.