

3 BEDROOMS

The *Guildford*

1,232 SQ. FT.

This three-bedroom split-entry home offers a bright and comfortable living space featuring a large open kitchen and dinette area and an oversized great room with plenty of windows and a patio door. The two bathrooms can be combined into a large single area with a convenient laundry centre. Choose from a variety of window treatments, rooflines and garage doors.

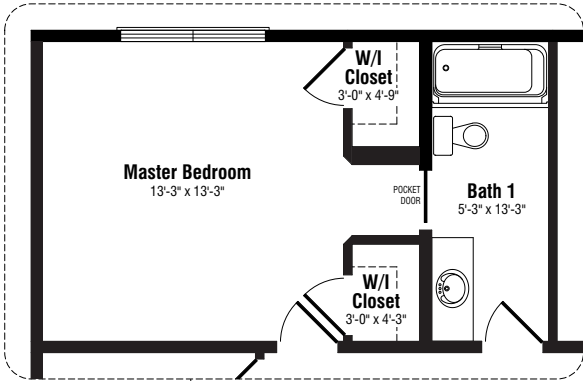
Standard features include:

- Recessed front entry with sidelights and transom
- Open-concept great room, kitchen and dinette
- Master bedroom with walk-in closet and ensuite
- Large kitchen with raised bartop counter
- 6 ft. patio door in great room
- Prestige *ComfortPlus* energy efficiency package

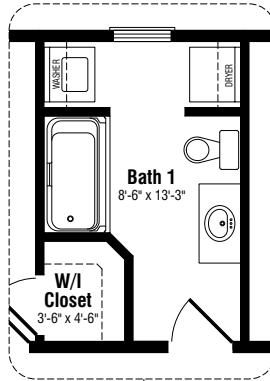
Floor plan options also offer:

- Vault ceiling in dinette with half-round window
- Alternate kitchen layout with angled raised bartop counter
- Master bedroom with double walk-in closet in one bathroom plan

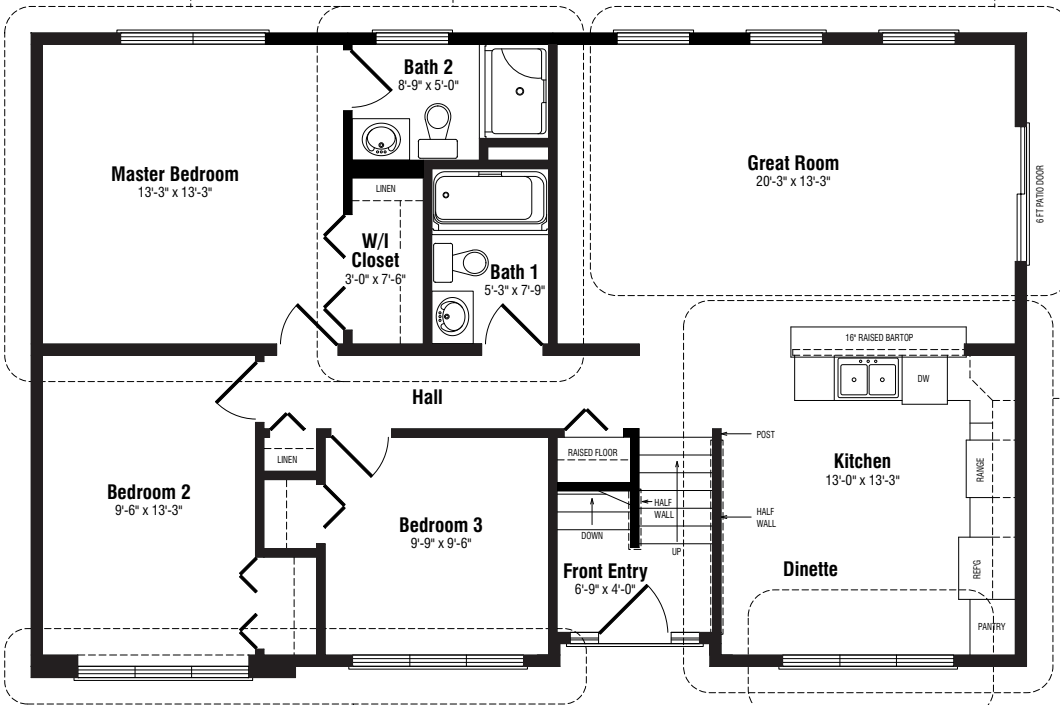
Master Bedroom Option



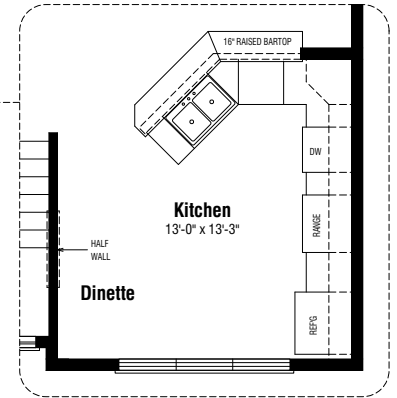
Bathroom Option



Great Room – Door & Window Option



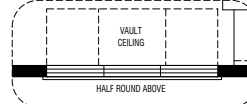
Kitchen Option



Front Elevation – Option B



Front Elevation – Option C



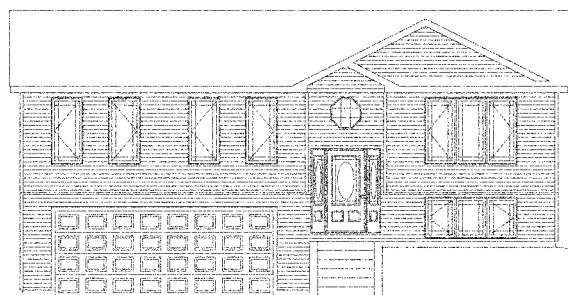
Dinette Ceiling Option – Elevation C

The Guildford

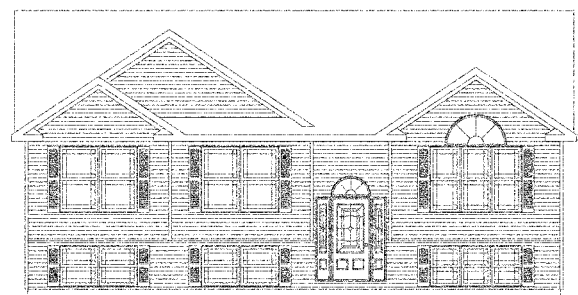
3 BEDROOMS • 2 BATHROOMS • 1,232 SQ. FT.

44' x 28'

ELEVATION B



ELEVATION C



Note: Any drawings, concepts or designs created by Prestige Homes are the sole property of Prestige Homes and are subject to copyright protection under the Canadian Intellectual Property Act. Any attempt at utilizing a design, part of a design or concept without express written permission is strictly prohibited. All dimensions are approximate. Sizes and specifications are subject to change without notice.