



3 BEDROOMS

# The *Victoria*

1,456 SQ. FT.

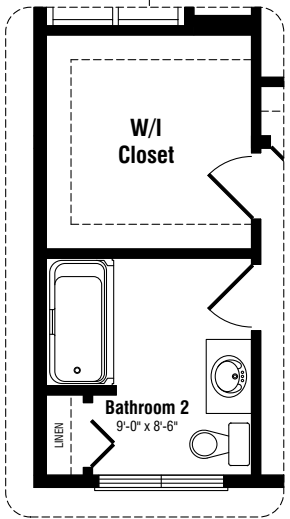
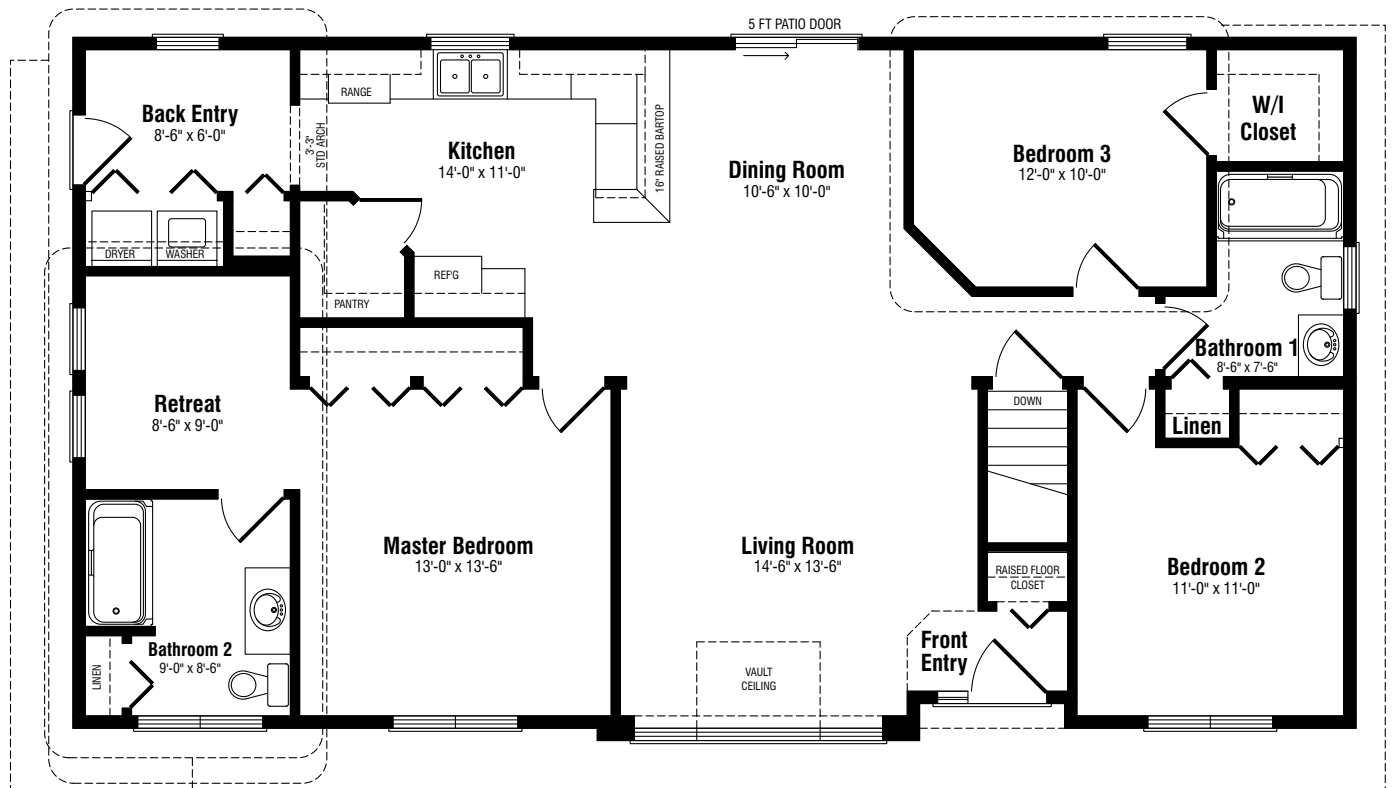
This ranch-style home features three bedrooms and a large living and dining area that's great for entertaining or family times. The vaulted living room ceiling enhances the spacious feeling of the home. An open-concept kitchen with adjacent laundry room is practical and convenient. Optional floor plans include a breakfast nook, den/home office and master bedroom walk-in closet.

**Standard features include:**

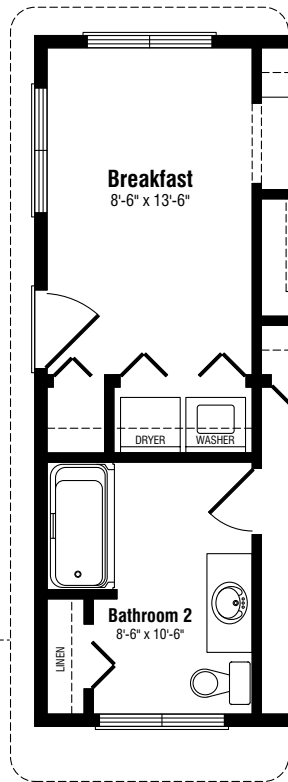
- Kitchen with walk-in pantry plus raised bartop counter for casual dining
- Master bedroom with ensuite and private retreat area
- Vaulted living room ceiling
- Prestige *ComfortPlus* energy efficiency package

**Floor plan options also offer:**

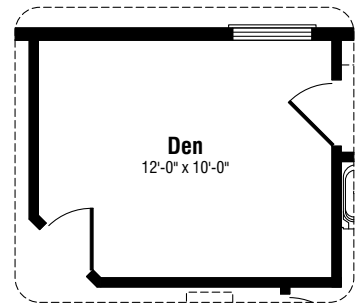
- Two bedrooms plus den
- Breakfast nook
- Master bedroom walk-in closet
- Covered front porch



**Walk-In Closet Option**



**Breakfast Nook Option**



**Den Option**

# The Victoria

3 BEDROOMS • 2 BATHROOMS • 1,456 SQ. FT.  
 52' x 28'

**ELEVATION B**



**ELEVATION C**



**Note:** Any drawings, concepts or designs created by Prestige Homes are the sole property of Prestige Homes and are subject to copyright protection under the Canadian Intellectual Property Act. Any attempt at utilizing a design, part of a design or concept without express written permission is strictly prohibited. All dimensions are approximate. Sizes and specifications are subject to change without notice.