



3 BEDROOMS

The *Whitby*

1,690 SQ. FT.

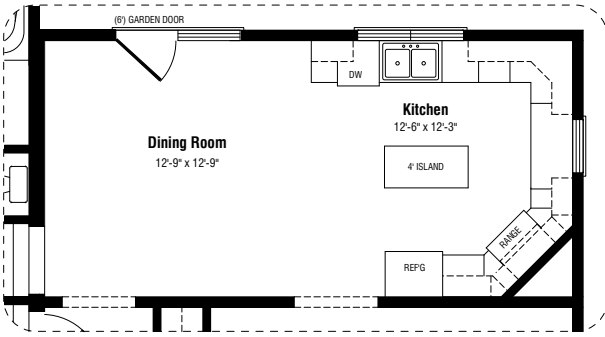
A classic split-level home that offers open-concept living plus a host of elegant features. The large living room has French doors and a window seat with optional vaulted windows. The kitchen offers a choice of counter plans, all with a centre island. Upstairs, the master bedroom features a luxury ensuite as well as “his and hers” walk-in closets. The laundry centre is conveniently located on the bedroom level.

Standard features include:

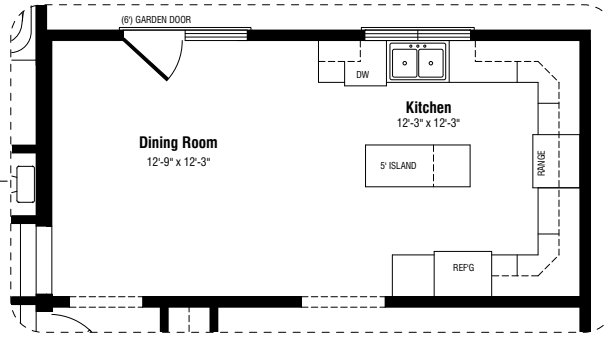
- Large open-concept living room, kitchen and dining room
- Entry with French doors to living room
- Large master bedroom with ensuite and “his and hers” walk-in closets
- Upper level laundry centre
- Choice of double-hung or casement windows
- 6 ft. patio or garden doors in dining room
- Prestige *ComfortPlus* energy efficiency package

Floor plan options also offer:

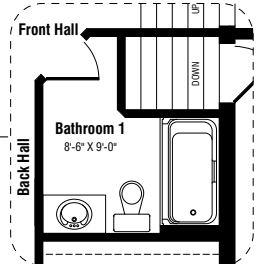
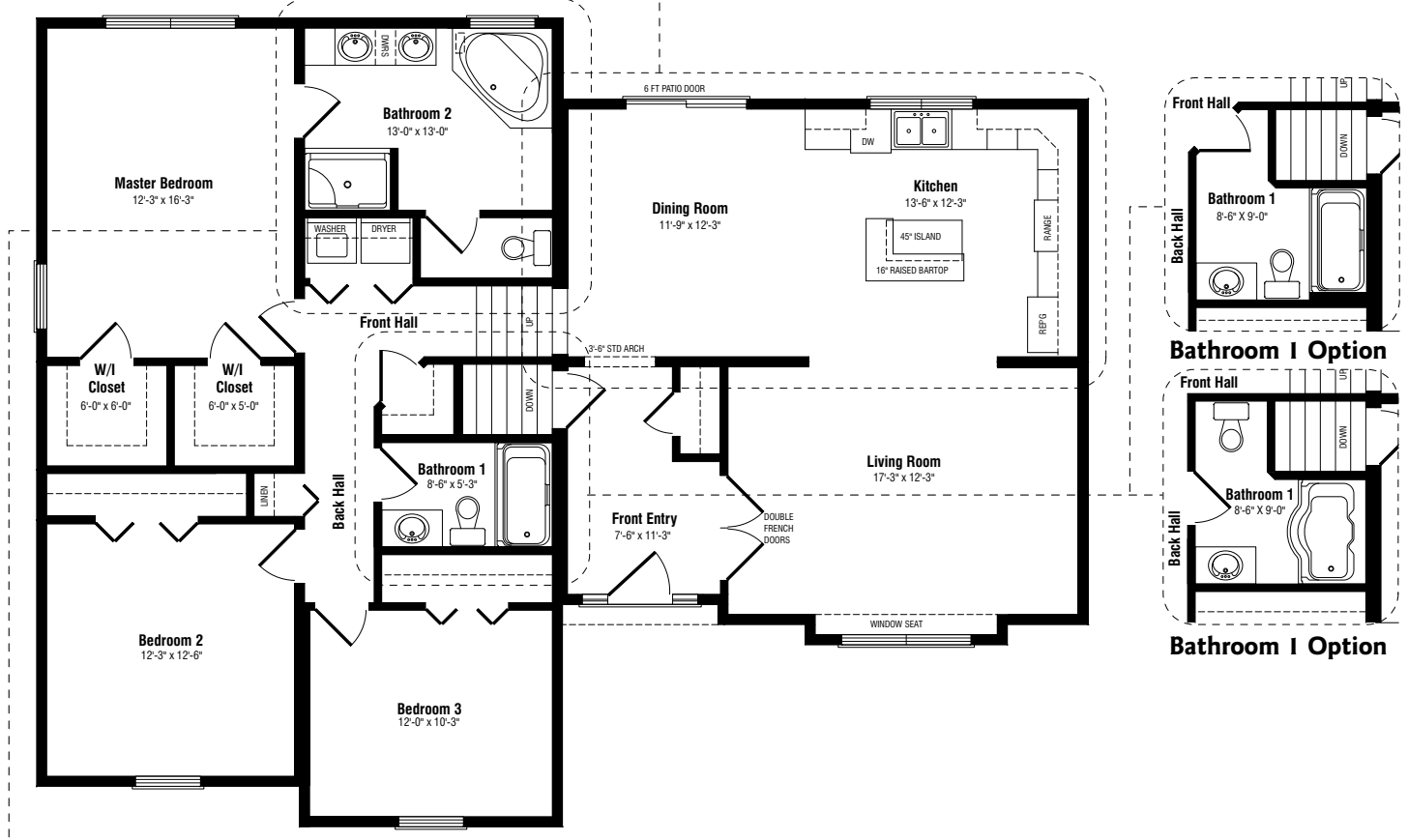
- Alternative kitchen counter plans, with up to 5 ft. centre island
- Ensuite with angled shower enclosure plus make-up area
- Vaulted picture window in living room



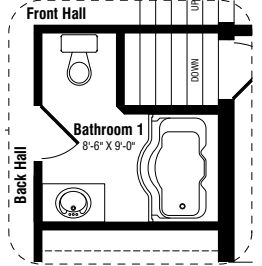
Kitchen Option



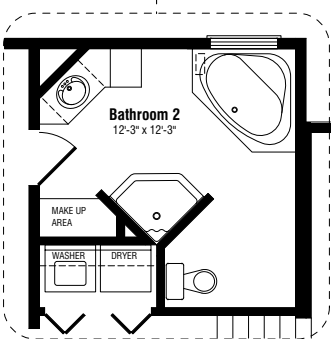
Kitchen Option



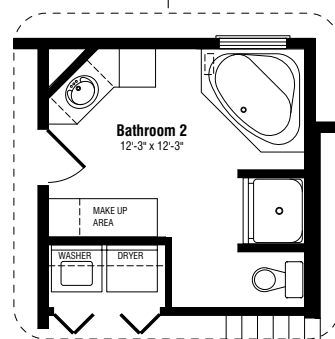
Bathroom 1 Option



Bathroom 1 Option



Bathroom 2 Option



Bathroom 2 Option

The Whitby

3 BEDROOMS • 2 BATHROOMS • 1,690 SQ. FT.

52' x 40'/22'

ELEVATION B



ELEVATION C



Note: Any drawings, concepts or designs created by Prestige Homes are the sole property of Prestige Homes and are subject to copyright protection under the Canadian Intellectual Property Act. Any attempt at utilizing a design, part of a design or concept without express written permission is strictly prohibited. All dimensions are approximate. Sizes and specifications are subject to change without notice.